



A	1	2	3	4	5	6	7	8	9
							REV		COMMENT
							DATE		DRAWN BY
							1.0		WS Release
B							2.0		MP Release
C							23/04/2021		SDD/KSS
D							18/06/2021		SDD/KSS
E									
F									

FPB-RA6E1

Table of Contents:

- Page 1 : Title Page
- Page 2 : Power Supply and HMI Features
- Page 3 : Arduino Shield Connection
- Page 4 : Pmod1 and Pmod2
- Page 5 : MCU - RA6E1 Ports
- Page 6 : MCU - RA6E1 Clocks
- Page 7 : MCU - RA6E1 Power
- Page 8 : Pin Headers

 **RENEASAS** Electronics Europe GmbH

TitleFPB-RA6E1

Title Page

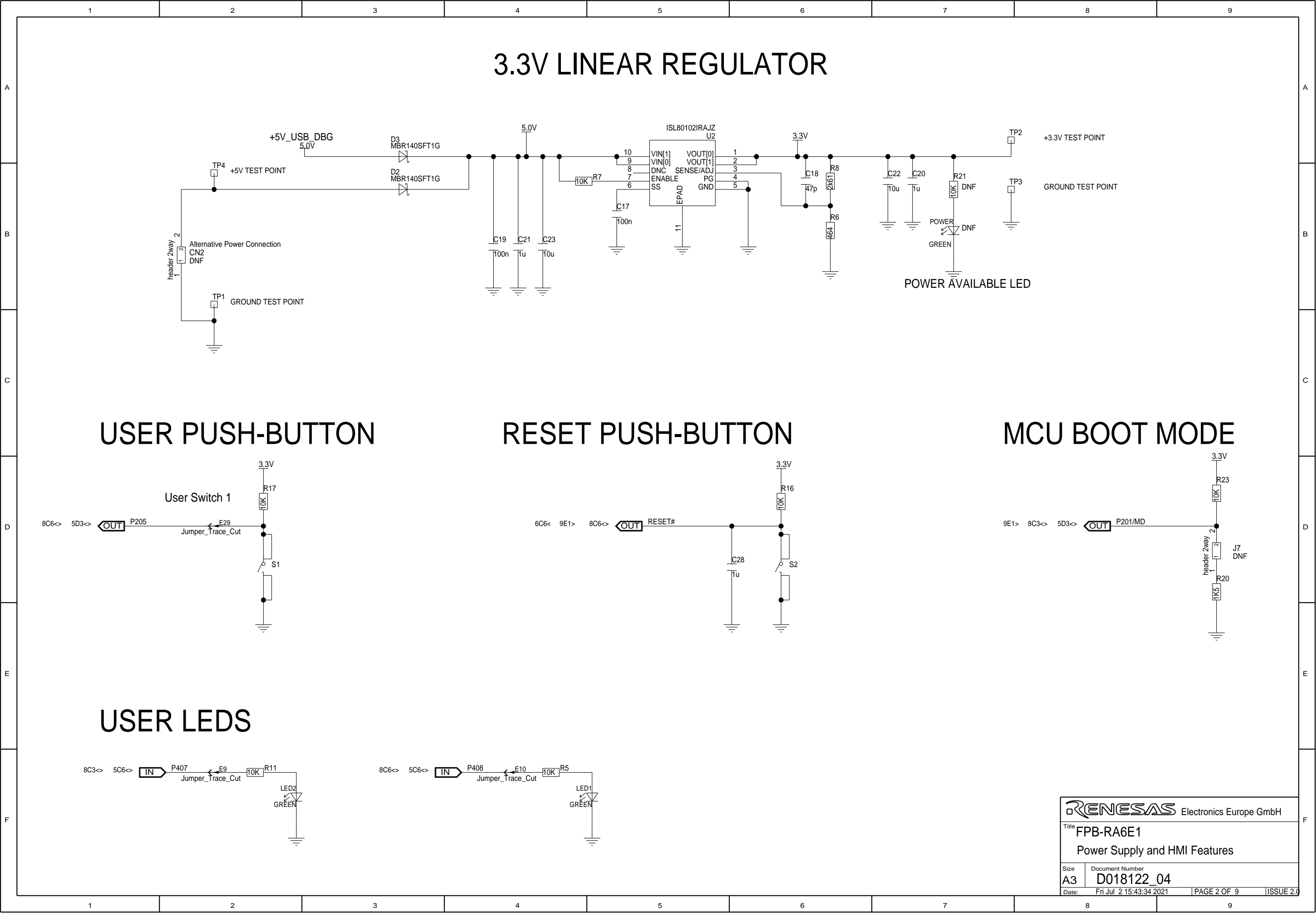
SizeA3

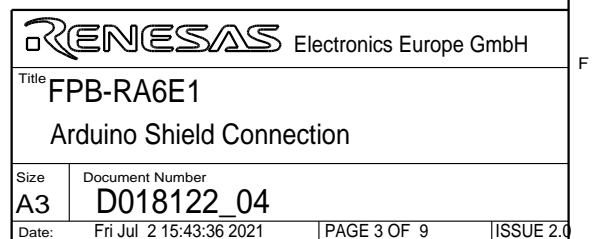
Document NumberD018122_04

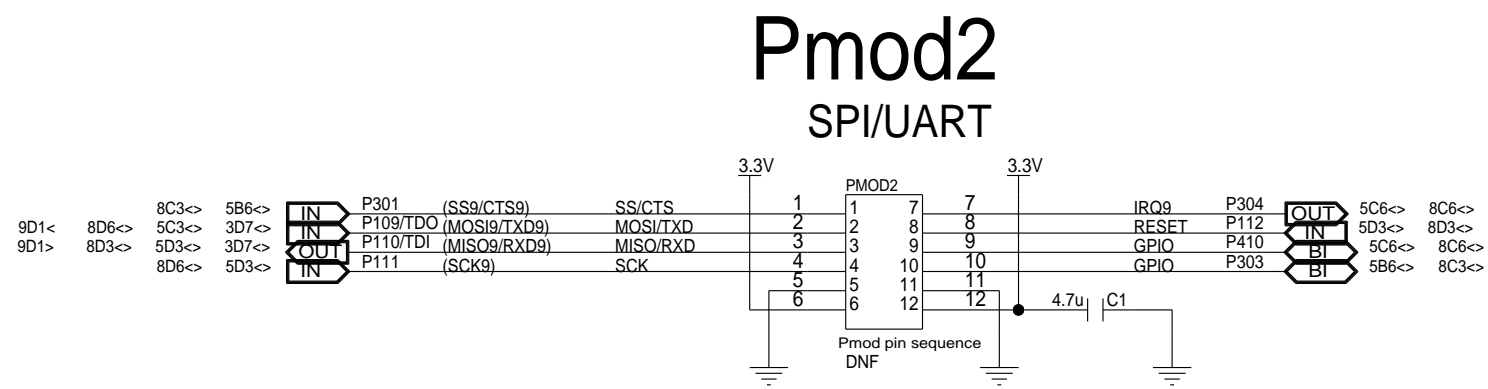
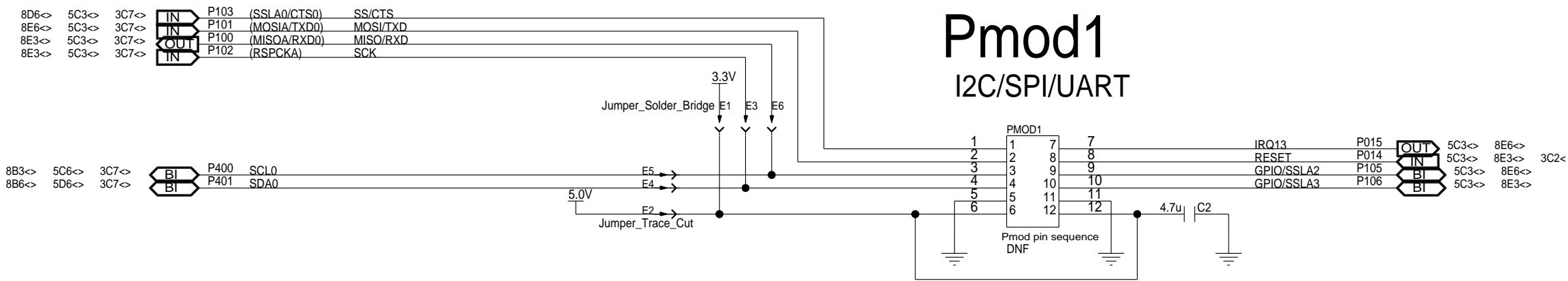
Date:Fri Jun 18 10:08:17 2021

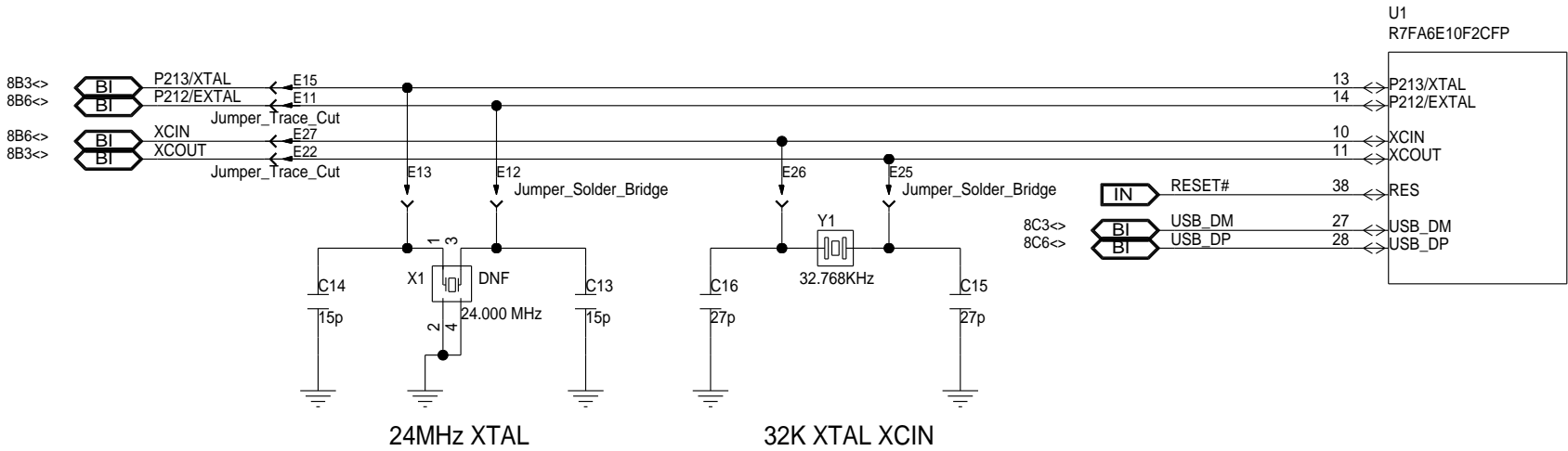
PAGE 1 OF 9

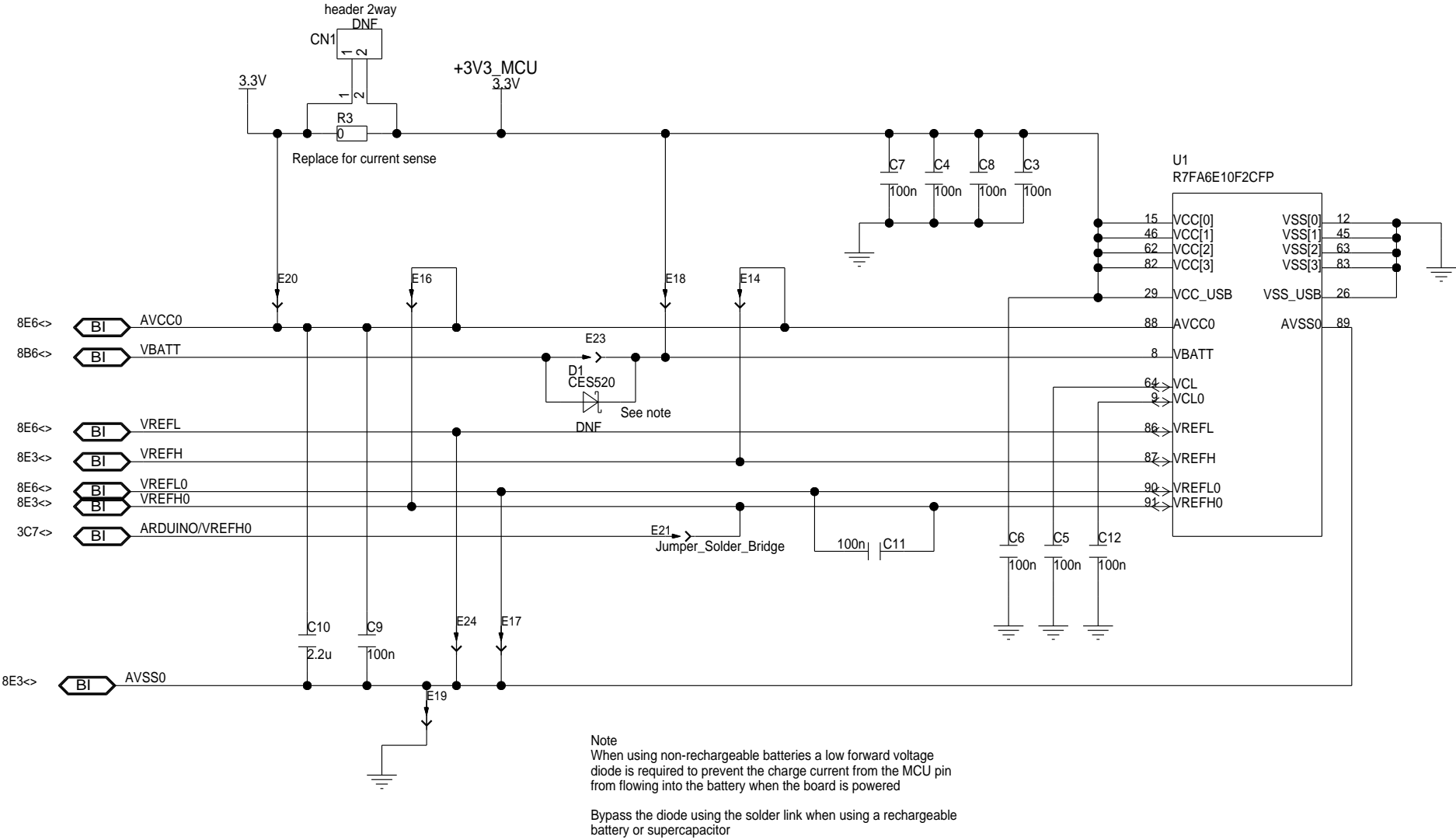
ISSUE 2.0



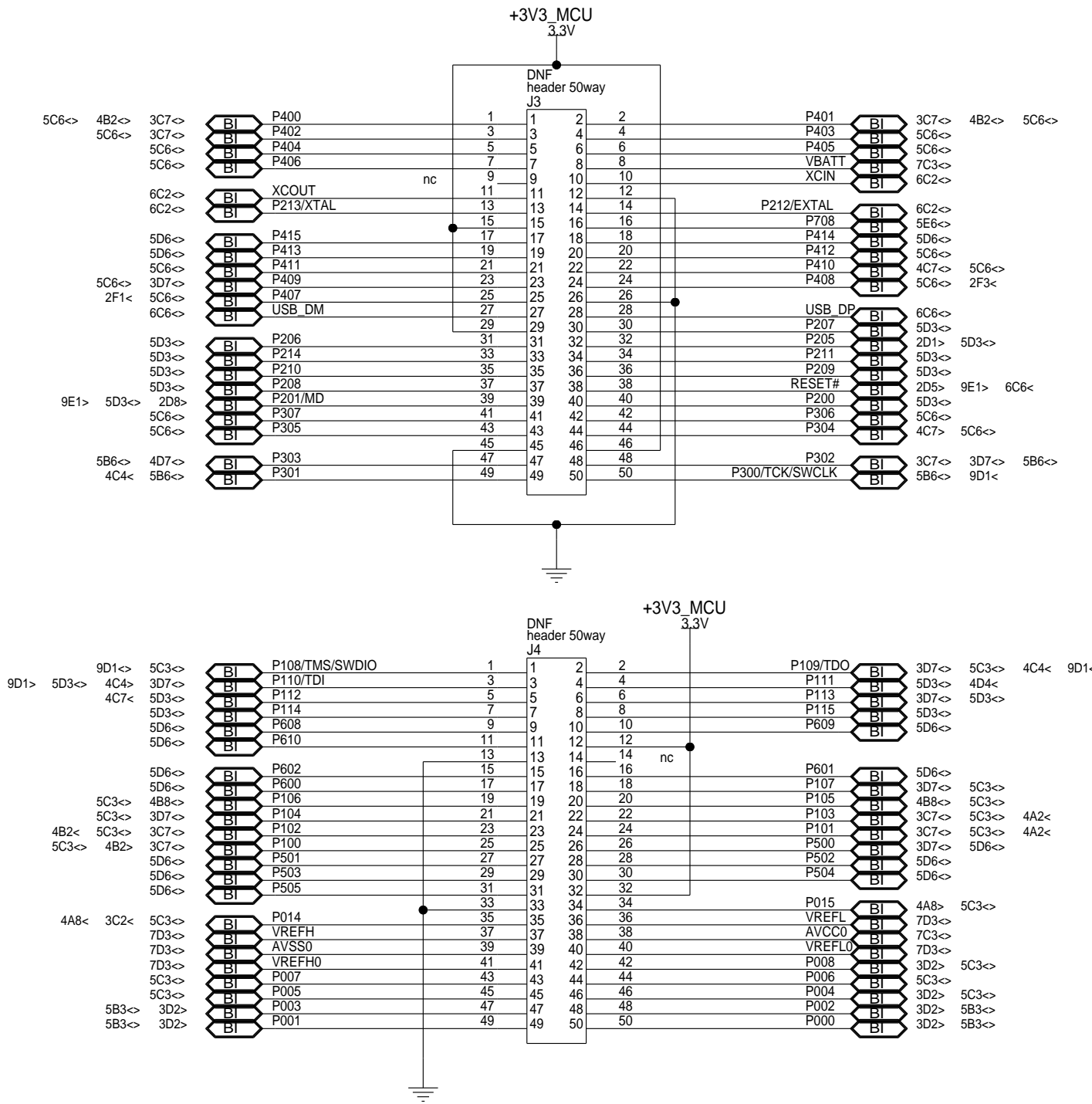








PIN HEADERS



Segger J-Link Emulator On Board (Debugger Circuit)

LED on = Power / Debugger ready
LED constant flashing = Debugger waiting for PC connection
LED flickering = Debugger active

J-LINK S124 RE-PROG.

J-Link OB USB

